

KINGLAKE WEST PRIMARY SCHOOL

FOUNDATION 2027 INFORMATION
SESSION



ACKNOWLEDGEMENT OF COUNTRY



I'd like to begin by acknowledging the Traditional Owners of the land on which we meet today, the Wurundjeri people and pay my respects to Elders past and present.



OUR SCHOOL

- 7 classrooms
- 4 specialist subjects – Auslan, PE, Visual Art, STEM
- Education support
- Literacy and Numeracy Intervention
- Sustainability Group
- School Leaders
- Buddies
- Interschool Sports
- Incursions/Excursions
- Camping program
- Special Events
- Parent helpers
- Canteen
- OSHC
- And much, much more





Honesty



Everyone Matters



Always Do Your Best



Respect



Teamwork

School Wide Positive Behaviour Expectations

Kinglake West Primary School

	Be Respectful	Be Responsible	Be Resilient	Always
Classroom	<ul style="list-style-type: none"> We let everyone learn We put up our hand and wait We focus on our learning 	<ul style="list-style-type: none"> We set learning goals We always try our best We keep our workspace tidy 	<ul style="list-style-type: none"> We take on feedback We try even when it is hard We encourage others 	<ul style="list-style-type: none"> We walk safely We keep our hands and feet to ourself We listen to others We tidy up after ourself We follow instructions We speak kindly We use our manners We look after all equipment and materials 
Yard	<ul style="list-style-type: none"> We look after nature We include others We play safely 	<ul style="list-style-type: none"> We follow game rules We use equipment safely We stay in school bounds We keep food inside buildings 	<ul style="list-style-type: none"> We have a positive attitude We stay calm We seek help when needed 	
Toilets	<ul style="list-style-type: none"> We use quiet voices We give others privacy We use the appropriate toilet We flush the toilet 	<ul style="list-style-type: none"> We wash our hands We keep them clean We report issues to a teacher We wait for our partner 		
Digital	<ul style="list-style-type: none"> We interact kindly We follow KWPS ICT agreement We report damage We keep our computer in one spot 	<ul style="list-style-type: none"> We keep food/drinks away We only access approved sites We keep our information private We seek help 	<ul style="list-style-type: none"> We stay calm We seek help 	

Calm Classrooms

- The Zones of Regulation is a tool that is used to teach students how to identify their feeling and using strategies to feel better.
- Calm visual spaces
- Social and Emotional Learning Curriculum
- Classroom routines and expectations
- Soft Start at 8:50am

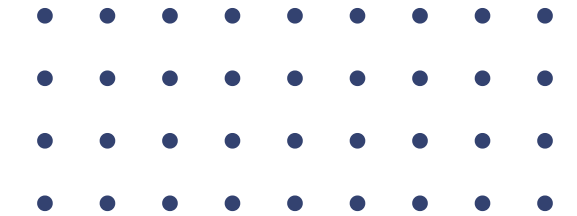


SOCIAL & EMOTIONAL LEARNING CURRICULUM

Developmentally sequenced from Foundation to Year 6 that encompasses personal capabilities, social connections, emotional regulation, positive relationships, attitudes and behaviours, support and help seeking.

Evidence based programs.

The first hour every Monday morning to set the week up.



- **THE RESILIENCE PROJECT**
- **BERRY STREET EDUCATION MODEL**
- **RESILIENCE RIGHTS AND RESPECTFUL RELATIONSHIPS**



RESILIENCE PROJECT



SOFT START

Soft start is so important in helping children get ready for their day of learning. It is an opportunity for your child to enter the classroom, pop their belongings away and get situated for the day. It allows parents to chat to the teacher briefly and leave prior to the bell knowing their child is settled.

Arriving at 8:50 allows them to start their day feeling connected to their teacher and their classmates.



If your child misses	That equals	Which is	Over 13 years of schooling, that is
1 day per fortnight	20 days per year	4 weeks per year	Nearly 1.5 years
1 day per week	40 days per year	8 weeks per year	Over 2.5 years
2 days per week	80 days per year	16 weeks per year	Over 5 years
3 days per week	120 days per year	24 weeks per year	Nearly 8 years

Regular attendance at school is vital to maintaining connections to their peers, the school environment and maintaining academic continuity.

It builds strong learning habits and each day offers new opportunities to learn both academically and socially.

PROMOTING A SENSE OF BELONGING

- Bi-Annual School Concert/Performance
- School Celebrations e.g. Harmony Day, Day for Daniel, Wombat Day
- Houses
- Sports Days
- Art Show
- Student Led Conferences
- Buddies



BUDDY PROGRAM



At the beginning of the school year, each Prep student is allocated a year 6 buddy. They complete a variety of activities together throughout the year.

Through the buddy program, the Preps are able to develop a sense of belonging, sense of security, social skills, confidence and more. The senior students show kindness, develop responsibility and a sense of purpose.

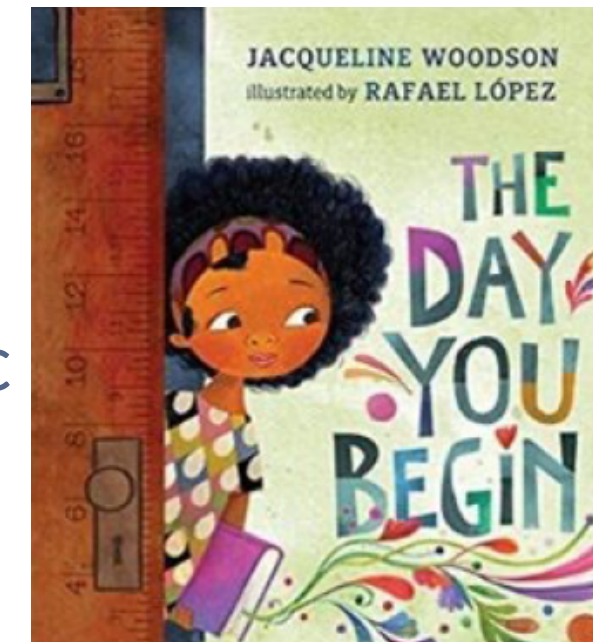
The buddy program is highly successful and eagerly anticipated by both Prep and senior students.



PREPARING FOR THE START OF SCHOOL



- Build independence at home e.g. getting dressed, carrying school bags, visual timetables for morning routines, packing lunchbox, unwrapping food
- Plan your goodbye routine, knowing who is dropping off and picking up and where from
- Drive past the school
- Play in the grounds on the weekends and during holidays
- Share your positive experiences about school
- Get excited about picking a lunchbox, school bag, new shoes etc



SCHOOL DAY



Soft Start - 8:50am

Session 1- 9:00

Fruit snack/brain break

Session 2- 10:00

Recess- 11:00

Session 3- 11:30

Session 4-12:30

Lunch Eating (inside)- 1:30

Lunch- 1:45

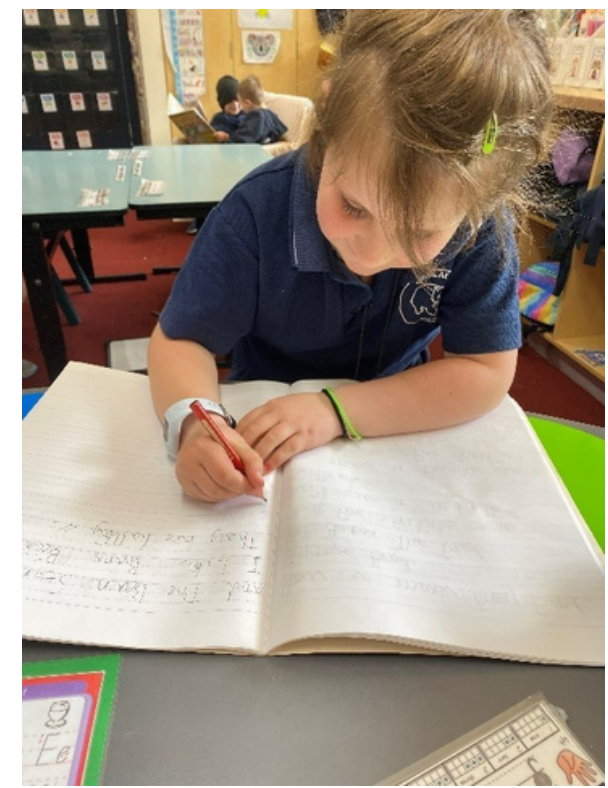
Session 5- 2:30

Dismissal- 3:30

LITERACY

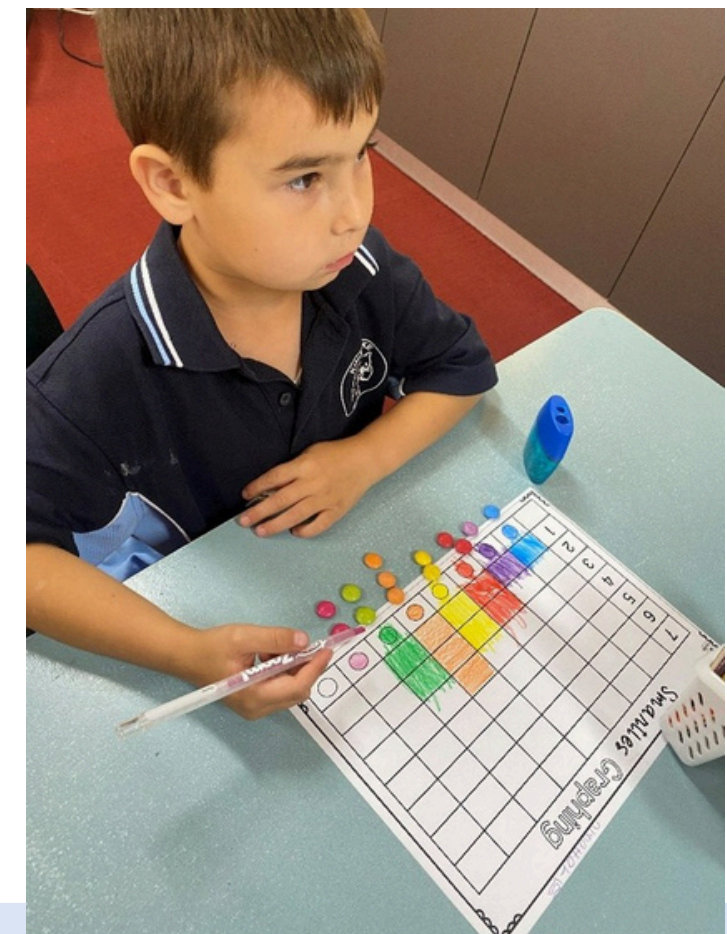
Across the school our students receive a minimum of two hours of Literacy instruction each day. Our daily programs include all of the following:

- Phonological awareness
- Systematic, synthetic phonics instruction
- Fluency exercises (including rapid letter recognition and decodable text reading in F-2)
- Spelling, grammar and syntax instruction
- Exposure to rich natural language texts which build background knowledge about topics linked to the curriculum and our world
- Dynamic vocabulary instruction
- Comprehension exercises, including literal, inferential and analytical text analysis
- Writing instruction



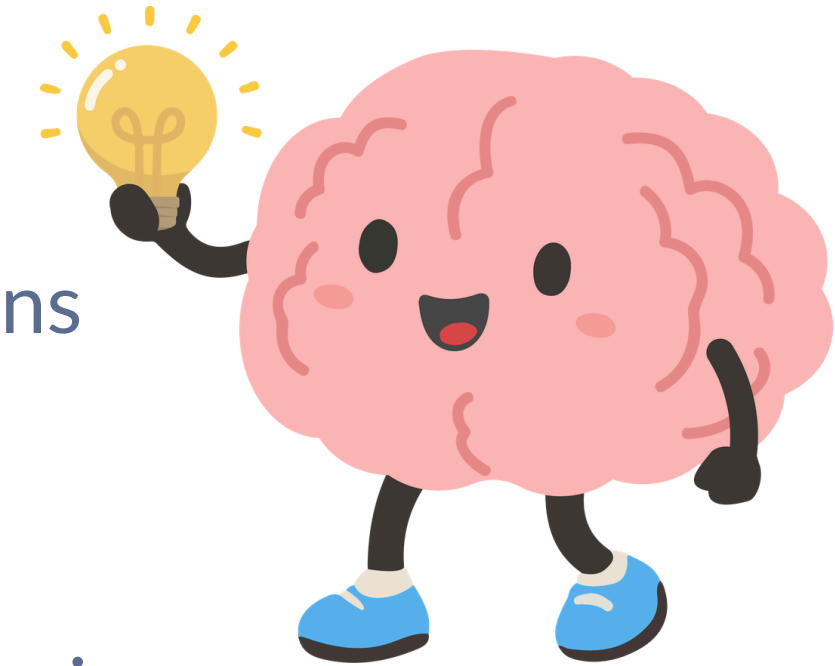
NUMERACY

- Students participate in a minimum of 5 hours of explicit Mathematics instruction in line with the Victorian Curriculum 2.0.
- Strong focus linking mathematics to real world connections.
- Tasks are hands on and open ended so that every student develops their confidence and finds success.
- Building the foundations so they can become successful mathematicians.



HOW STUDENTS LEARN BEST

- Active Engagement Over Passive Listening: Kids learn more by doing, talking, writing, moving, and applying information, rather than just listening.
- The Power of Practice & Repetition: Spaced, repeated, and varied practice helps consolidate knowledge into long-term memory. Short, regular sessions are more effective than infrequent, long "cramming" sessions.
- Building on What They Know: New information is best retained when connected to existing knowledge. Encouraging children to explain concepts in their own words builds these mental connections.
- Managing Cognitive Load (Chunking): The brain can only process a limited amount of new information at once. Breaking tasks down into smaller steps helps prevent overwhelm and improves retention.
- Safe and Supportive Environment: A positive environment where mistakes are treated as learning opportunities improves confidence and student success.



PARENT & COMMUNITY INVOLVEMENT

We welcome parents to become involved in school activities. As well as supporting the school, your child enjoys your participation.

Some of the activities you can volunteer for include assisting in:

- Canteen
- Reading support
- School excursions
- Camps
- Sport Activities
- Community Events and Fundraising
- Mother's Day and Father's Day Stalls
- School Council



HOW TO BE IN THE KNOW

XUNO, XUNO, XUNO, XUNO!!

ALL school communication and event permission and/or payment is on XUNO!

It is **ESSENTIAL** for ALL parents to download the app.

The logo for XUNO FAMILY is displayed on a blue square background. The word "XUNO" is written in large, white, bold, sans-serif capital letters. Below it, the word "FAMILY" is written in smaller, blue, bold, sans-serif capital letters, centered within a white rectangular box.

XUNO
FAMILY

WEBSITE/NEWSLETTER/ASSEMBLY

General information in regards to school policies and documents, and general school information can be found on the website.

Newsletters are available on the website and XUNO. These contain important dates and current information.

A whole school assembly is held weekly at 3:10pm on a Friday.



UNIFORM

Our uniform supplier is Spartan School World.

Online orders only.

Weekly delivery to school free of charge.

Tops only need to be logoed.





TheirCare
Where Kids love to be!

Exceptional Before & After School Care
and amazing School Holiday programs!

TheirCare provides inclusive, child-led, **FUN** outside school hours care

Click here for more information about
registration, fees and bookings!

TheirCare
Where Kids love to be!

1300 072 410
www.theircare.com.au

THEIR CARE

Before School:

6:30am

After School:

6:00pm

School Holiday

Program

TRANSITION SESSION

Term 2

Kinder Visits
with Kinglake
Ranges

Term 3

Specialist
Taster
Session

PMP
program

Term 4

5 official
transition
sessions with
the current
Foundation
teacher



ENROLMENT FOR FOUNDATION 2027

Online enrolment forms via website.

Available from 20th April, 2026.

Request paper copy if you would like.

<https://students.educationapps.vic.gov.au/s/>



QUESTIONS?

